

P2 and P2B

VITICULTURE

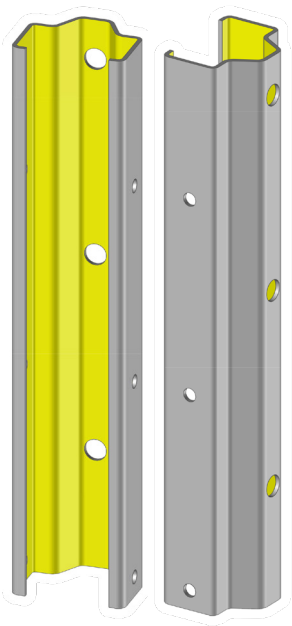


End Post

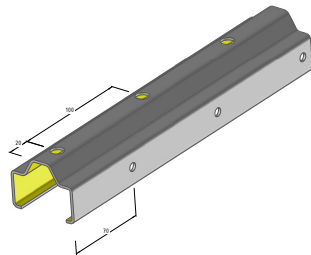
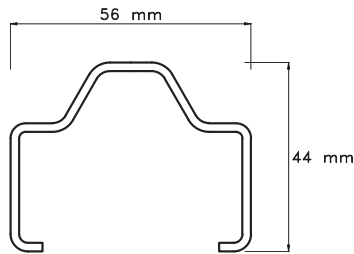


SLPA
INDUSTRIE & AGROFOURNITURES

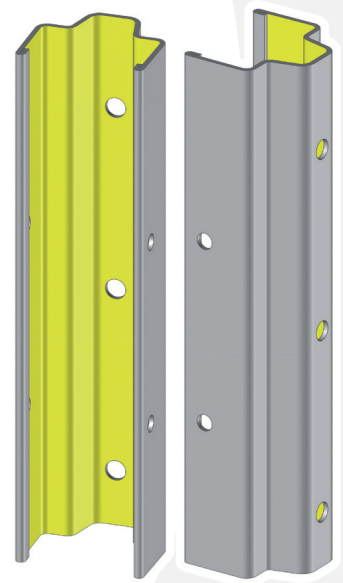
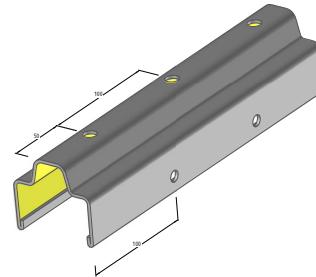
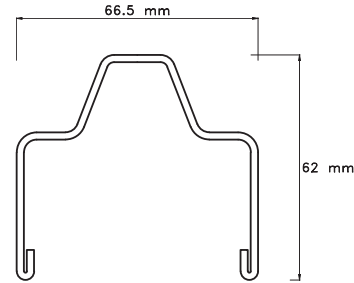
End posts with 100 mm spacing drilling system



P2



P2B



Features :

- Robustness suited for low to medium rows lengths
- Equipped with **ø 10.8 mm diameter holes at the front** for mooring wires fixing accessories
- Equipped with **ø 7 mm diameter holes on the sides** for fixed and lifting wires

Features :

- High robustness adapted to row lengths
- Fitted with **ø 10.8 mm diameter holes at the front** for mooring wires fixing accessories
- Fitted with **ø 9 mm diameter holes on the sides** for fixed and lifting wires

Benefits : **P2 and P2B**

- Profile & shape studied to optimize resistance to tension force
- Space-saving for better machine harvesting at the end of the rows

Create your own product

| | |
|------------------|--|
| Length | Min. 1,50m to Max. 3,00m |
| Material | S250GD or S250GD XCarb™ (low carbon steel) |
| Coating | Z275 (NF EN 10142) or ZAM (Zinc, Aluminium, Magnesium) |
| Thickness | 2 mm or 2,5 mm |
| Packaging | 200 pieces per batch for P2 and 100 pieces per batch for P2B |

Why choose SLPA® posts ?



Customization



Resistance



Weight



Life time



Productivity



Eco-Friendly



100% recyclable





P2 and P2B

End Post



Recommendations for use :

Reminder : Recommended maximum interspacing between 2 row posts : 5 m

For high acidity soils, ZAM coating is recommended.

Install the end posts with an appropriate angle of approximately 60°.

The recommended installation depth is 1/3 length of the post to guarantee optimal support.

Connect the mooring at 2 points on the end post and space it at least 4/5 length of the post to optimize its resistance.

Notes

