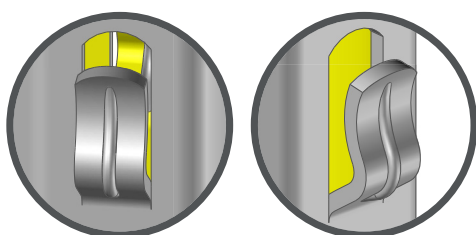
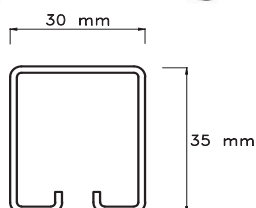
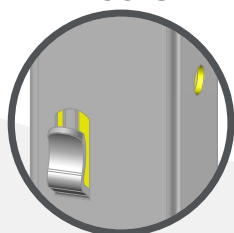


# RAIL 35x30

Row Post  
with hooks



Hooks



VITICULTURE



SLPA

INDUSTRIE & AGROFOURNITURES

## Product Description

Row post with hook system and 100 mm spacing  
Reinforced hooks for greater resistance  
Galvanized coating

## Benefits : RAIL 35 X 30, the most versatile

- Facilitates the installation and adaptation of the height of the trellising wires
- Shape of reinforced hooks studied to limit crushing
- Suitable for all types of vineyard locations
- Ideal to post replacement in existing vineyards, compact section and easy handling

## Productivity

Density



Yield



Planting Height



## Create your own product

Length	Min 1,40 m to Max 2 ,50 m
Material	S250GD or S250GD XCarb™ (low carbon steel)
Coating	Z275 (NF EN 10142) or ZAM (Zinc, Aluminium, Magnesium)
Thickness	Only 1,5 mm
Hooks Types	8,5 X 19 mm with support
Hooks Position	Face to face
Packaging	300 pieces per batch

Why choose SLPA® posts ?



Customization



Resistance



Weight



Life time



Productivity



Eco-Friendly



100% recyclable





# RAIL 35x30

Row Post  
with hooks

## Accessories



### Spreader

Adapted to the post.  
The spreader allows you to keep the moving wires in a lower position when the vines are dormant. Save time during lifting.



### Post cap

Adapted to the post. It protects the top of the post when pressing in.

## Recommendations for use

When installing posts with a post driver, make sure to use the appropriate post cap.  
In order to guarantee optimal support, the recommended installation depth is 1/3 length of the post.  
For securing fixed wires, knock the hooks down with a hammer.  
Recommended maximum interspacing : 5 m.  
For high acidity soils, ZAM coating is recommended.

## Notes

