

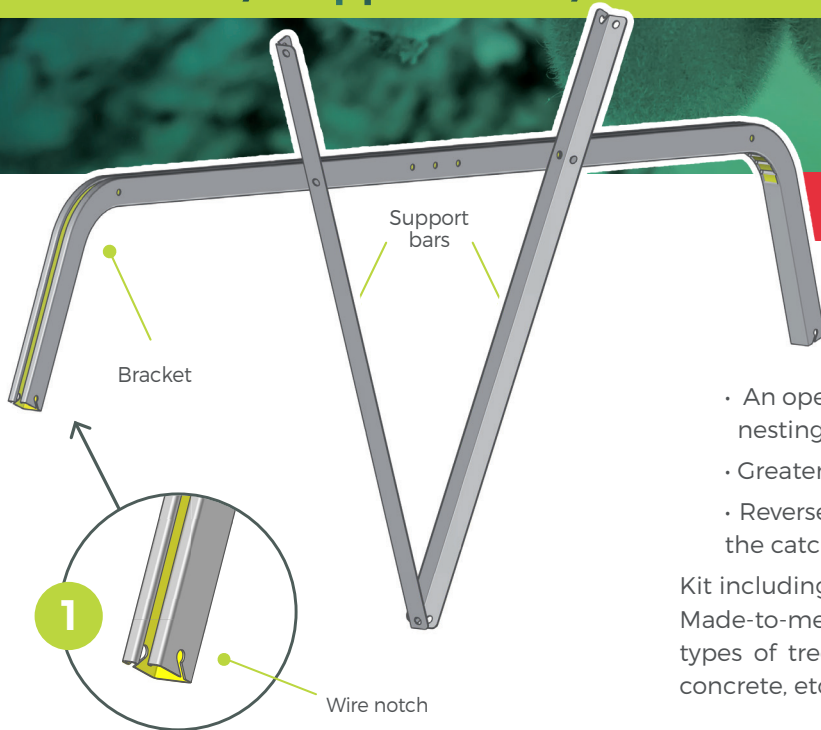


# Kit Safe T.Bar

Bracket / Support bars / Head Post / Accessories



**SLPA**  
INDUSTRIE & AGROFOURNITURES



## New Bracket "SAFE"

### Benefits of the new Kit Safe T.Bar SLPA®

- An open profile at the top of the bracket to prevent wasps from nesting there.
- Greater safety for operators during installation and harvesting.
- Reverse bending of the steel brackets reinforces the rigidity of the catch wires (angle by request).

Kit including Brackets and support bars with customizable features. Made-to-measure manufacturing and drilling to adapt to different types of tree crops and all types of posts available (metal, wood, concrete, etc.).

## 1 - Make-up the bracket :

|                          |  |
|--------------------------|--|
| <b>length</b>            | By request                                 |
| <b>Dimensions</b>        | 50 X 40 or 62 X 55 (end-of-row bracket)    |
| <b>Thickness</b>         | 1,5 mm or 2 mm                             |
| <b>Drilling diameter</b> | 11 mm                                      |
| <b>Wire notch</b>        | By request                                 |
| <b>Material</b>          | S250GD or S250GD XCarb™ (low carbon steel) |
| <b>Coating</b>           | Galva Z 275 (NF EN 10142)                  |
| <b>Angle «A»</b>         | 0° à 90° (by request)                      |

## 2 - Choose the support bars :

Angle drilled in 3 places with wire notch by request

Rail 35 X 30 with stamped and drilled ends :

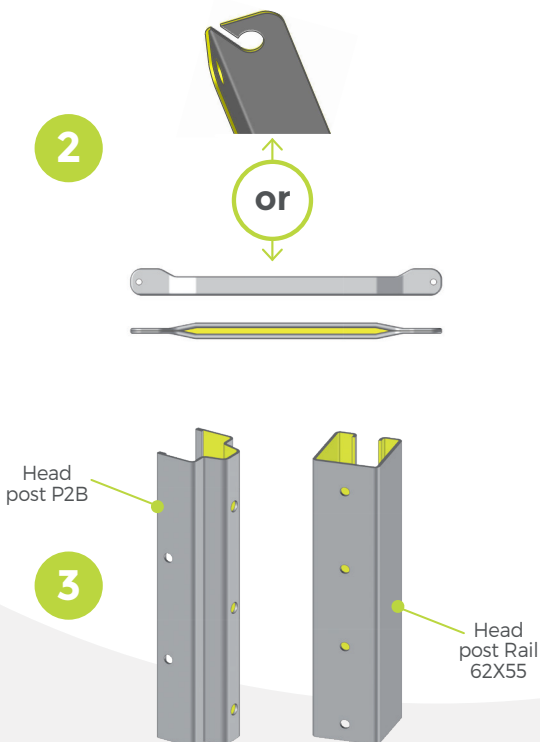
|                   |         |                   |         |
|-------------------|---------|-------------------|---------|
| <b>Dimensions</b> | 40 X 40 | <b>Dimensions</b> | 35 X 30 |
| <b>Thickness</b>  | 2 mm    | <b>Thickness</b>  | 1,5 mm  |

## 3 - Choose the head post :

**P2B**

**Rail 62X55**

|                   |                            |                   |                            |
|-------------------|----------------------------|-------------------|----------------------------|
| <b>Dimensions</b> | by request                 | <b>Dimensions</b> | by request                 |
| <b>Thickness</b>  | 2,5 mm                     | <b>Thickness</b>  | 2 mm                       |
| <b>Coating</b>    | ZAM (Zinc, Alu, Magnesium) | <b>Coating</b>    | ZAM (Zinc, Alu, Magnesium) |



## Why choose SLPA® steel ?



Customization



Resistance



Weight



Life time



Productivity



Eco-Friendly



100% recyclable



FABRICATION FRANÇAISE



# Kit Safe T.Bar

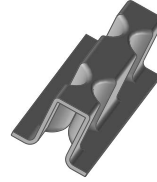
Bracket / Support bars / Head Post / Accessories

## Accessories



### Caliper

Curved threaded bar (diameter 10 mm) for attaching to wooden posts.



### Anti-crushing clip

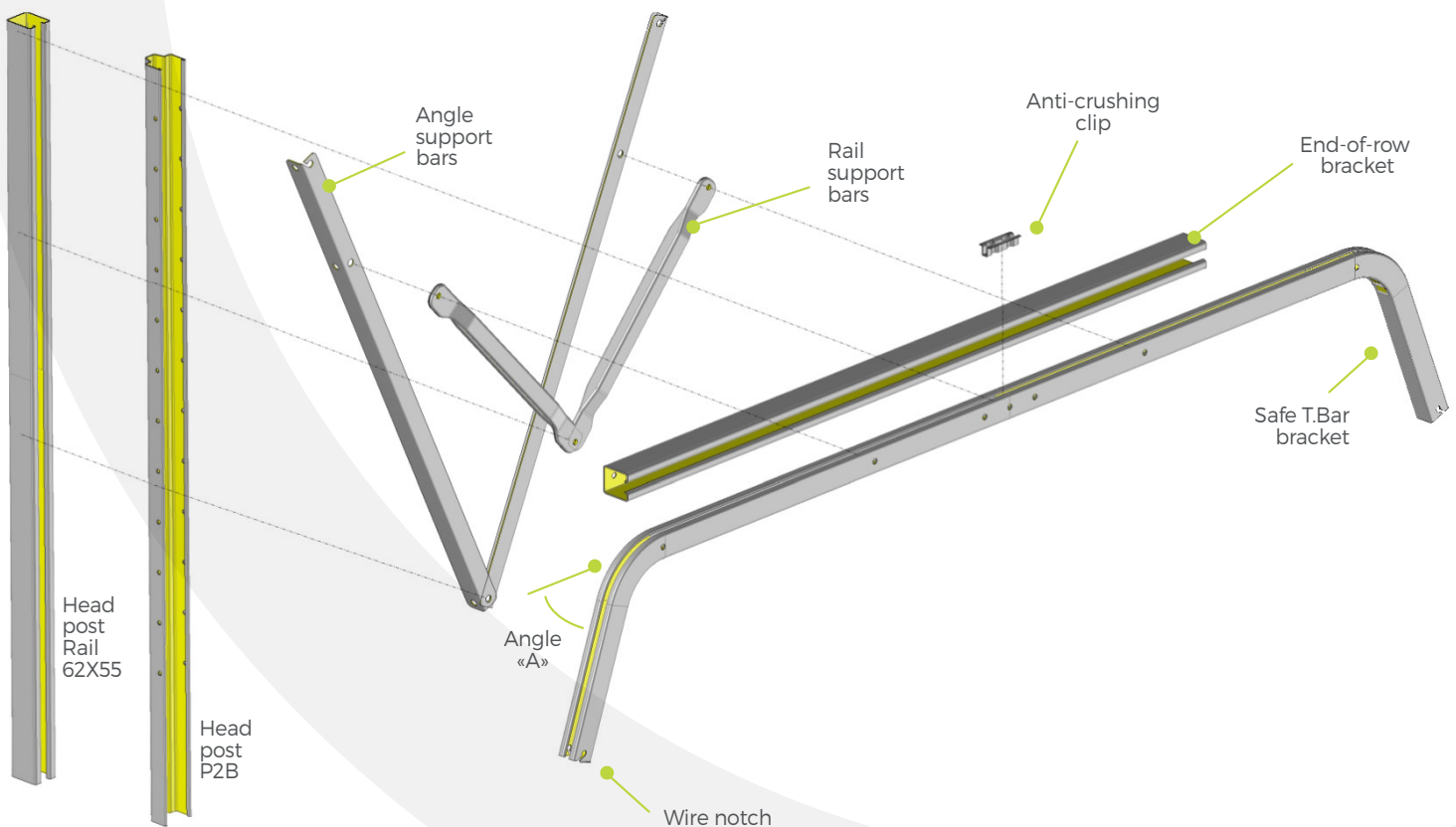
Deep-drawn spacer.



### Flange 30/10 :

Drilled flange for fixing bracket to concrete head post.

## Complete Safe T.Bar Kit plan



Scan to see our products sheets

