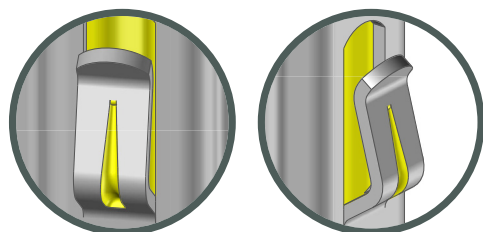
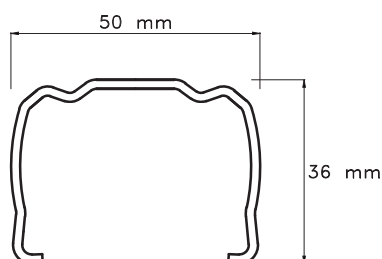
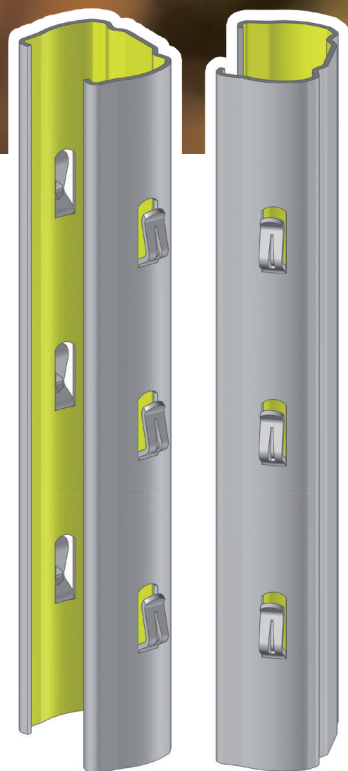
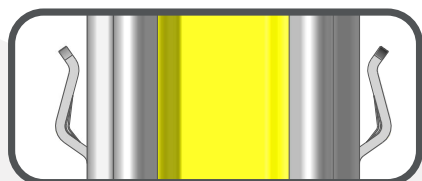


# PR 12

Row Post  
with hooks



Hooks PR type



Why choose SLPA® posts ?



Customization



Resistance



Weight



Life time



Productivity



Eco-Friendly



100% recyclable



FABRICATION  
FRANÇAISE

VITICULTURE



SLPA

INDUSTRIE & AGROFOURNITURES

## Product Description

Row post with hooks system and customizable spacing

Galvanized coating

Additional drilling by request and end post cutting of a specific notch system SPT (Short pruning technique)

## Benefits : PR 12, the safe bet

- Shape of reinforced hooks studied to limit crushing and simplify opening
- Facilitates the installation and adaptation of the height of the trellising wires
- Rigidity and stability adapted to mechanization (recommended for SPT)
- Suitable for all types of soil and vineyard locations
- Recommended for post replacement in existing vineyards

## Productivity

Density



Yield



Planting Height



## Create your own product

Length	Min. 1,40m to Max. 2,80m
Material	S250GD or S250GD XCarb™ (low carbon steel)
Coating	Z275 (NF EN 10142) or ZAM (Zinc, Aluminium, Magnesium)
Thickness	1,5 mm or 1,8 mm
Hooks Types	PR type of 8,5 X 23mm <b>Customizable spacing by request</b>
Hooks Position	Face to face - <b>Notch system SPT by request</b>
Packaging	300 pieces per batch
Marking	By request

# PR12

Row Post  
with hooks

VITICULTURE



## Accessories



### Spreader

Adapted to the post.  
The spreader allows you to keep the moving wires in a lower position when the vines are dormant. Save time during lifting.



### Post cap

Adapted to the post, It protects the top of the post when pressing in.

## Recommendations for use

When installing posts with a post driver, make sure to use the appropriate post cap.  
In order to guarantee optimal support, the recommended installation depth is 1/3 length of the post.  
For securing fixed wires, knock the hooks down with a hammer.  
Recommended maximum interspacing : 5 m.  
For high acidity soils, ZAM coating is recommended.

## Notes

