

P2 and P2B

VITICULTURE



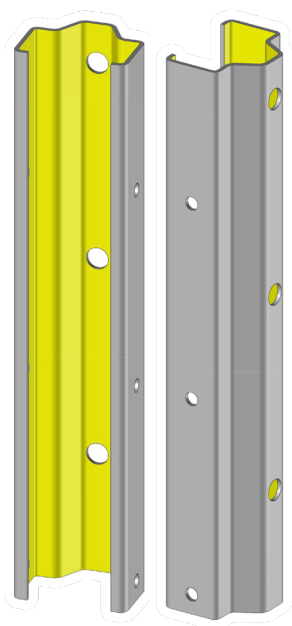
End Post

[Retour vers le site](#)

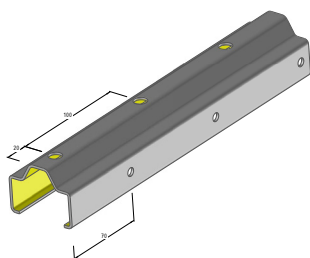
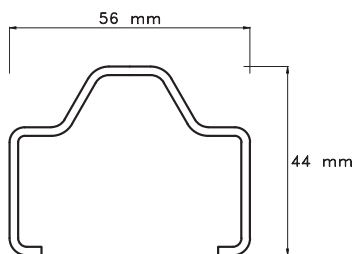


SLPA
INDUSTRIE & AGROFOURNITURES

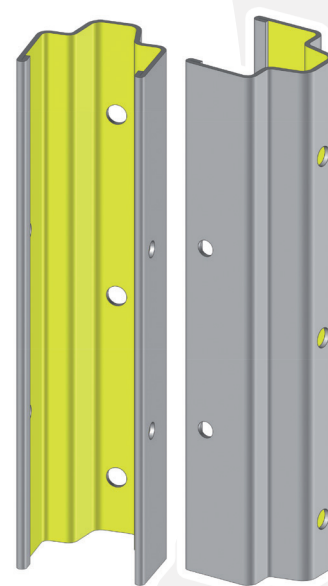
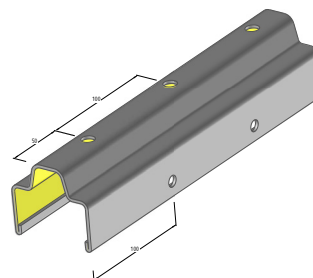
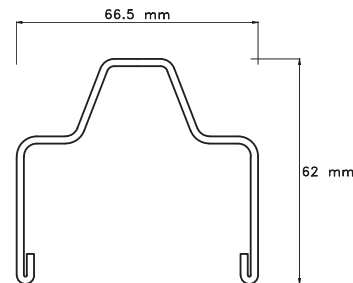
End posts with 100 mm spacing drilling system



P2



P2B



Features :

- Robustness suited for low to medium rows lengths
- Equipped with **Ø 10.8 mm diameter holes at the front** for mooring wires fixing accessories
- Equipped with **Ø 7 mm diameter holes on the sides** for fixed and lifting wires

Features :

- High robustness adapted to row lengths
- Fitted with **Ø 10.8 mm diameter holes at the front** for mooring wires fixing accessories
- Fitted with **Ø 9 mm diameter holes on the sides** for fixed and lifting wires

Benefits : P2 and P2B

- Profile & shape studied to optimize resistance to tension force
- Space-saving for better machine harvesting at the end of the rows

Create your own product

Length	Min. 1,50m to Max. 3,00m
Material	S250GD or S250GD XCarb™ (low carbon steel)
Coating	Z275 (NF EN 10142) or ZAM (Zinc, Aluminium, Magnesium)
Thickness	2 mm or 2,5 mm
Packaging	200 pieces per batch for P2 and 100 pieces per batch for P2B

Why choose SLPA® posts ?



Customization



Resistance



Weight



Life time



Productivity



Eco-Friendly



100% recyclable





P2 and P2B

End Post



Recommendations for use :

Reminder : Recommended maximum interspacing between 2 row posts : 5 m
For high acidity soils, ZAM coating is recommended.

Install the end posts with an appropriate angle of approximately 60°.

The recommended installation depth is 1/3 length of the post to guarantee optimal support.
Connect the mooring at 2 points on the end post and space it at least 4/5 length of the post to optimize its resistance.

Notes

