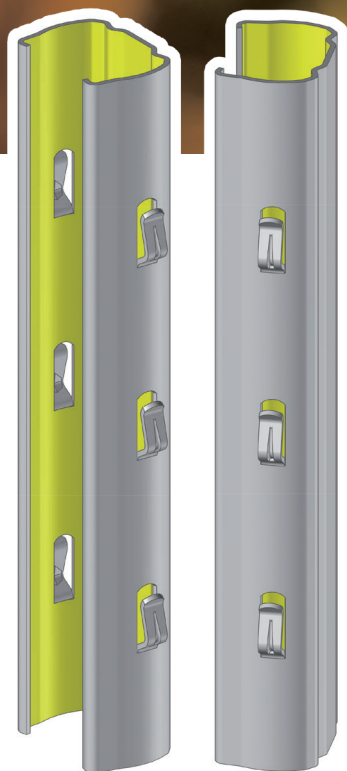




PR 12

Row Post
with hooks



SLPA
INDUSTRIE & AGROFOURNITURES

[Retour vers le site](#)

Product Description

Row post with hooks system and customizable spacing
Galvanized coating
Additional drilling by request and end post cutting of a specific notch system SPT (Short pruning technique)

Benefits : PR 12, the safe bet

- Shape of reinforced hooks studied to limit crushing and simplify opening
- Facilitates the installation and adaptation of the height of the trellising wires
- Rigidity and stability adapted to mechanization (recommended for SPT)
- Suitable for all types of soil and vineyard locations
- Recommended for post replacement in existing vineyards

Productivity

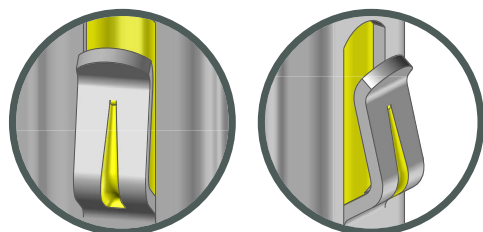
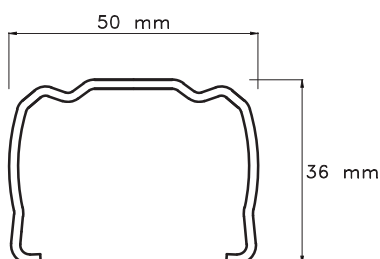
Density



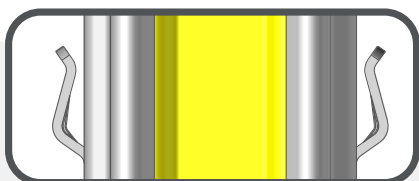
Yield



Planting Height



Hooks PR type



Create your own product

Length	Min. 1,40m to Max. 2,80m
Material	S250GD or S250GD XCarb™ (low carbon steel)
Coating	Z275 (NF EN 10142) or ZAM (Zinc, Aluminium, Magnesium)
Thickness	1,5 mm or 1,8 mm
Hooks Types	PR type of 8,5 X 23mm Customizable spacing by request
Hooks Position	Face to face - Notch system SPT by request
Packaging	300 pieces per batch
Marking	By request

Why choose SLPA® posts ?



Customization



Resistance



Weight



Life time



Productivity



Eco-Friendly



100% recyclable





PR12

Row Post
with hooks

Accessories



Spreader

Adapted to the post.
The spreader allows you to keep the moving wires in a lower position when the vines are dormant. Save time during lifting.



Post cap

Adapted to the post, It protects the top of the post when pressing in.

Recommendations for use

When installing posts with a post driver, make sure to use the appropriate post cap.
In order to guarantee optimal support, the recommended installation depth is 1/3 length of the post.
For securing fixed wires, knock the hooks down with a hammer.
Recommended maximum interspacing : 5 m.
For high acidity soils, ZAM coating is recommended.

Notes

