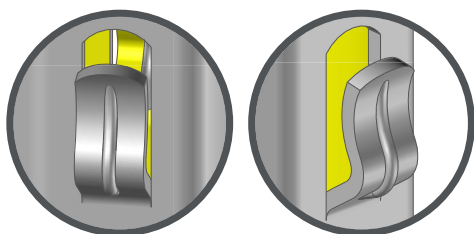
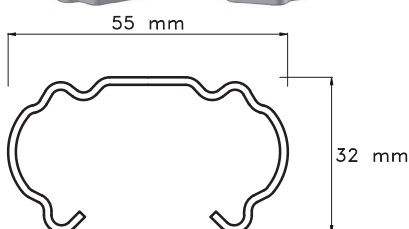
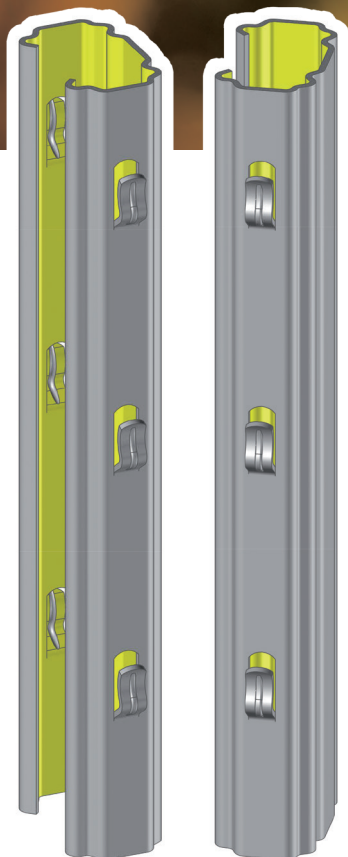


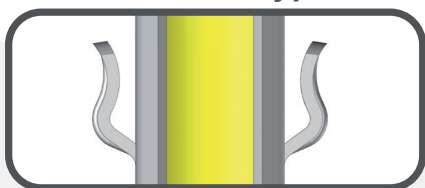


# PG 32

## Line post with hooks



Hooks PG type



**SLPA**  
INDUSTRIE & AGROFOURNITURES

## Product Description

Line post with hook system and customizable spacing (70 mm minimum)  
Reinforced hooks for greater resistance  
Galvanized coating  
Additional drilling available by request and custom notch cutting available for end posts for SPT (Short Pruning Technique).

## Benefits : PG 32, the most efficient

- Facilitates the installation and adaptation of the height of the trellising wires
- Rigidity and stability adapted to mechanization (recommended for SPT)
- Shape of reinforced hooks studied to limit crushing
- Suitable for all types of soil and vineyard locations

## Productivity

Density



Yield



Planting Height



## Create your own product

|                |   |
|----------------|---|
| Length         | Min. 1.40m to Max. 2.80m  |
| Material       | S250GD or S250GD XCarb™ (low carbon steel)  |
| Coating        | Z275 (according to current standards) or ZAM (Zinc, Aluminium, Magnesium)                 |
| Thickness      | 1.5mm or 1.8 mm   |
| Hooks Types    | PG type of 8.5 X 19mm<br><b>Customizable spacing by request (minimum spacing of 70mm)</b> |
| Hooks Position | Face to face - <b>Notch system SPT by request</b>   |
| Packaging      | Bundles of 300 units  |
| Marking        | By request  |

## Why choose SLPA® posts ?



Customization



Resistance



Weight



Life time



Productivity



Eco-Friendly



100% recyclable





# PG 32

Line Post  
with hooks

## Accessories



### Spreader

Adapted to the post.  
The spreader allows you to keep the moving wires in a lower position when the vines are dormant. Save time during lifting.



### Post cap

Adapted to the post.  
It protects the top of the post when pressing in.

## Recommendations for use

When installing posts with a post driver, make sure to use appropriate post cap.  
In order to guarantee optimal support, the recommended installation depth is 1/3 length of the post.  
For securing fixed wires, knock the hooks down with a hammer.  
Recommended maximum interspacing : 5m.  
For high acidity soils, ZAM coating is recommended.

## Notes

